

Winnington Place

Seven shared ownership homes within the Winnington Place development, just outside of Northwich, Cheshire.



prospa
HOMES



Welcome to Winnington Place

Winnington Place is a development of 124 properties by Anwyl Homes and located off Winnington Avenue, Northwich, CW8 4FT. In a prime mid-Cheshire location on the edge of Northwich. We have seven shared ownership homes made up of The Cowley, The Coxley and The Marton house types.

The one Cowley and the three Coxley two-bedroom homes, will be available to reserve off-plan from November 2022 with an estimated move-in date of early March 2023 (subject to change).

The three Marton three-bedroom homes were available to reserve off-plan from June 2022 and are now all sold.

Become part of a new community in the heart of Cheshire when you move to Winnington Place, adjacent to the Winnington Village Development. Once complete, you will have everything you need on your doorstep, with children's play areas in various locations across the development, a local convenience store, fast food take-aways and barbers, with more shops to come. This, combined with a great choice of pubs and restaurants in Northwich and with a number of Ofsted 'Outstanding' schools nearby, means you and your family can really enjoy village life.

The homes have been carefully designed for modern living, giving you and your family light and airy living and great energy efficiency. Features include a private driveway, turfed rear fenced garden, with a bike store. Please see below for individual property details, layout, and site plans.

Northwich town centre is approximately 1.5 miles from the site and has a wide range of facilities including several supermarkets, a cinema, a range of high street stores, banks, and a leisure centre. There are a variety of sports grounds close by including a golf course, rugby and football pitches and a cricket ground, with Marbury Country Park also close-by.

Applications are open to all eligible applicants, but you must have a local connection to Cheshire West and Chester i.e. family or workplace. Please contact us to check your eligibility.

Cheshire West & Chester Council
Marbury Country Park
Part of the Mersey Forest

Cowley

From left to right: 1.Coxley 2.Cowley 3.Coxley 4.Coxley



Marton



Coxley

From left to right: 1.Coxley 2.Cowley 3.Coxley 4.Coxley



Prices vary on each of the homes shown. Please check individual house details for all the correct information. **All details correct at time of publication. Pictures for illustrative purposes only.**



Transport and Accessibility

Two train stations are situated within a 2.5 mile radius of the development- Hartford (Liverpool/Birmingham line) and Greenbank (Chester/Manchester line), offering passengers direct routes to Liverpool, Manchester, Birmingham, Chester, and London, among others.

From M6 Junction 19

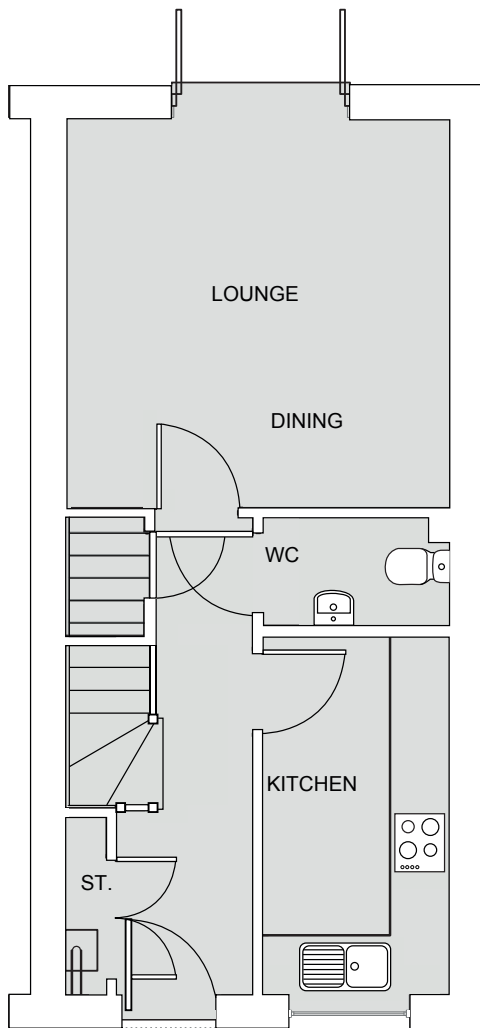
Take the A556 towards Chester for 8.8 miles. Turn right at the traffic lights signposted for Hartford, at the next set of traffic lights turn right onto Chester Road, at the next set of lights turn left onto Bradburn's Lane, at T-junction turn right on to Beach Lane and then at lights turn left down Burrows Hill, at the next T-junction turn right and the Anwyl Homes development is on your right hand side.

From Chester City

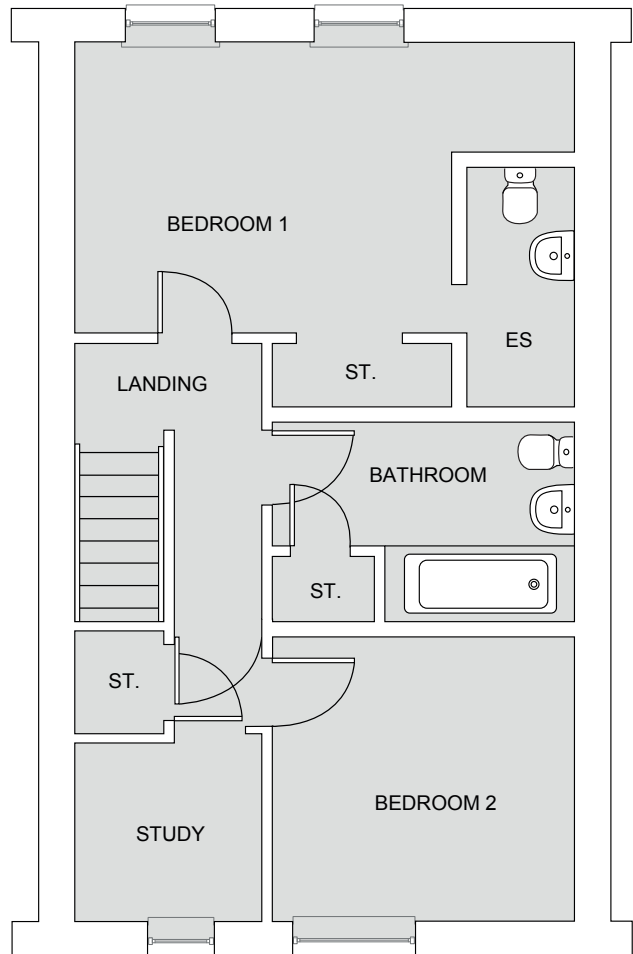
Take the A54 and A556 towards Manchester for 12.2 miles, turn left signposted for Hartford. At the T-Junction turn left onto Chester Road and at the second set of lights turn left onto Bradburn's Lane, at T-junction turn right on to Beach Lane and then at lights turn left down Burrows Hill, at the next T-junction turn right and the Anwyl Homes development is on your right hand side.

The Cowley Floor Plan

2 Bedrooms



Ground Floor

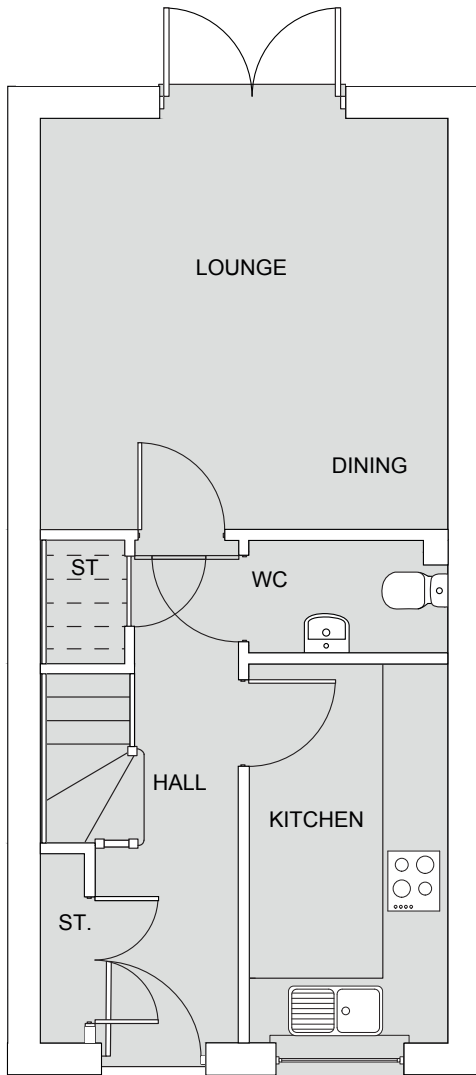


First Floor

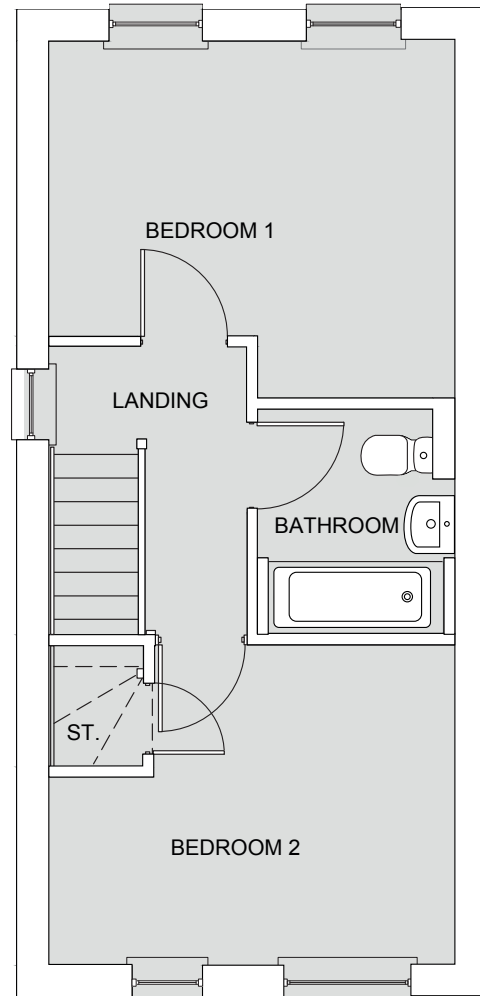
Floor plans are for illustrative purposes only. Layouts/window locations will vary depending on orientation on the site. Purchasers should take their own measurements before ordering flooring, furniture, fixtures and fittings.

The Coxley Floor Plan

2 Bedrooms



Ground Floor



First Floor

Floor plans are for illustrative purposes only. Layouts/window locations will vary depending on orientation on the site. Purchasers should take their own measurements before ordering flooring, furniture, fixtures and fittings.



prospa
HOMES

 The Coxley (2 bed)

 The Cowley (2 bed)

 The Marton (3 bed)



Winnington Place

Email: sales@prospahomes.co.uk

Call: 01606 813319

Website: www.prospahomes.co.uk



ProspaHomes



ProspaHomes



ProspaHomes