

# Upton Dene

Phase 3 & 4 -  
Launch from January 2022

The Calverton  
and The Chatburn



**Calverton**



**Chatburn**



**prospa**  
HOMES

# Welcome to Upton Dene

Everything you need with all the fantastic benefits of both city and country living. Prospa Homes is delighted to offer the last two phases of shared ownership homes at Upton Dene, Chester. With 5 homes already sold in this popular development on the outskirts of Chester.

Phases three and four of our shared ownership homes feature two different house types - The Calverton and The Chatburn. Terraced and Semi Detached available. All homes feature vinyl flooring in the kitchen, bathroom and W.C. together with kitchen appliances, please refer to each home plan for all the individual details. Each home is built to Morris Homes high specification with modern interiors.

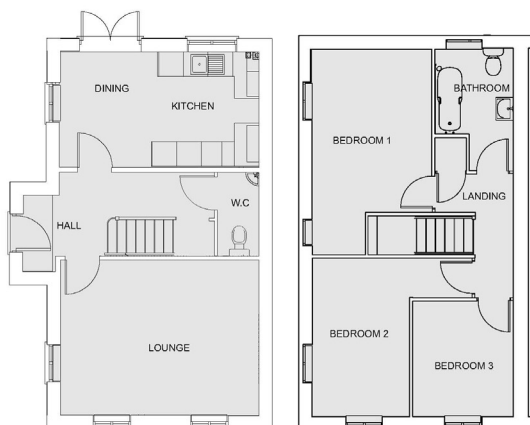
Click [here](#) for a 3D tour of the Chatburn.

Click [here](#) for a 3D tour of the Calverton.

Upton Dene has the glorious city of Chester right on your doorstep, just three miles from the city centre, a 15 minute drive or seven minute train journey.

Our brand new three bedroom shared ownership homes are ideal for growing families, with a great choice of schools close to home. Upton-By-Chester High School is a five minute drive away and there are four state primary schools in the local area.

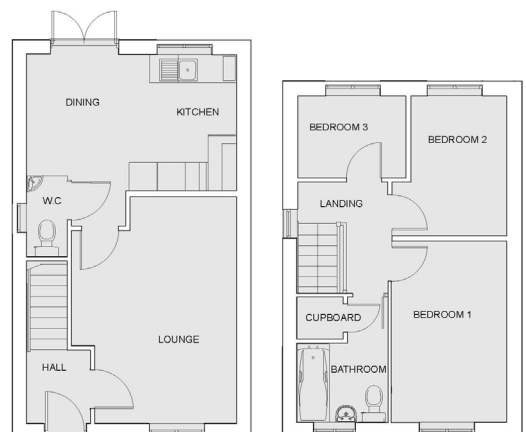
**Calverton Floor Plan**



**Ground Floor**

**First Floor**

**Chatburn Floor Plan**



**Ground Floor**

**First Floor**

Prices vary on each of the homes shown. Please check individual house details for all the correct information. **All details correct at time of publication. Pictures for illustrative purposes only.**

**Email:** [sales@prospahomes.co.uk](mailto:sales@prospahomes.co.uk) **Call:** 01606 813319

Upton Dene, Liverpool Road, Upton, Chester CH2 1UL [www.prospahomes.co.uk](http://www.prospahomes.co.uk)